

Health & Safety – Painting Practice

UBC Department of Art History,
Visual Art and Theory



Introduction

This outlines the general guidelines for use of the AHVA painting studios and AHVA Health and Safety policies regarding painting. Please familiarize yourself with this document and its contents as a guide for safe painting practice in AHVA facilities.

AHVA studios are communal facilities and all users must respect all AHVA and UBC guidelines and also each other. Please maintain them throughout your practice. Keep in mind that building a respectful, healthy and safe studio community enriches that community's practice.

If you have any questions regarding these policies, please consult with your area Technician or the Department's Studio Safety Advisor



Work Together Policy

After-hours and unsupervised access to AHVA facilities is permitted only when you have a Work Partner physically present with you in the facility.

- **After-hours:** any time outside of Monday to Friday, 8:30am to 5:00pm.
- **Work Partners:** students 1) currently taking AHVA courses, 2) who are familiar with the facility, studio conduct, and the health, safety, and emergency policies currently in place.

Failure to fully comply with the above Work Alone policy will result in the suspension of extended hours access to AHVA facilities.



Health & Safety & Painting



Overview

**Most, if not all artist's paints and mediums are toxic in some way.
Awareness of the hazards associated with your materials is your obligation.**

Safety Data Sheets (SDS) for painting related media are available in DSOM 106, DSS 112 and AAC 3007. For an overview of hazards related to pigment use in studio, please refer to the studio copy of the **Pigment Hazards Guide**, located in DSS 112 (T.A. office) and the AHVA Workshop (DSS Room 106.)



WHMIS

BASIC STUDIO AND PAINTING GUIDELINES



BASIC STUDIO AND PAINTING GUIDELINES I

- Do not eat in the studio while working with toxic materials (paint, thinners etc.)
- Drinks must be in closed and/or covered containers.
- Do not point brushes with your lips.
- Avoid any paint or solvent contact with skin. Protective gloves are highly recommended! Consult the area Technician if you have questions about the appropriate personal protective equipment (PPE) for your practice.
- Wash your hands very carefully after all studio work.
- **Do not pour paint, pigment wastewater or solvents down the sink or into the garbage.** Use the *three-bin(stage?) paint washing method* (as detailed in this orientation) and the pigment wastewater drums provided in all painting studios.
- Take care of our floors. Use a drop cloth. Brown Kraft paper and masking tape is available in the studios to cover floors before beginning work.

BASIC STUDIO AND PAINTING GUIDELINES II

- Any solvent or pigment contaminated spills over 1 litre should be reported immediately to the Technician in DSS 106 at 604 822 4647 or the Studio Safety Advisor
- Dry Pigment (powdered pigment) is not permitted in AHVA studios. Please see staff for advice on this material and to discuss appropriate handling, PPE and an alternate facility to accommodate this.
- Cadmium pigments and paints are not permitted in AHVA facilities/studios.
- **The use of aerosol sprays (spray painting) is not permitted anywhere at UBC, inside or outside of buildings, except in a spray booth!**
- **Use spraypaint and aerosols only in the spray booth** located in room 3008 in the Audain Art Centre. A personal respirator fitted with Organic Vapour (OV) cartridges and P100 particulate pre-filters is required. UBC requires you to have your respirator *fit tested* annually to ensure a proper fit on your face. Using aerosols while wearing an improperly fitted respirator can be lethal. Students are responsible for purchasing, maintaining, and using your respirator. They are available at the P.R.C. store in the Audain Art Centre.

Health & Safety & Painting

Using Acrylic Paints



Acrylics: Clean Up and Disposal



Do not pour acrylic paint or pigment contaminated liquid down the sink or into the garbage. Paint clogs drains. Pigments pose environmental hazards.

The washing of brushes and other contaminated items (e.g. palettes, palette knives) must NOT be done in any of the studio sinks or washrooms. Please use the marked basin basins provided for washing brushes.

Three-Bin Paint Washing

1. **Begin by wiping surplus wet paint onto provided rags.** Dirty rags must be put into the marked covered metal **OILY RAG BIN**. Do not put dirty rags in the garbage.
2. **Pour 1-2 inches** (2.5 - 5 cm) of fresh water into all three wash bins.
3. **Begin washing brushes** and other items in FIRST WASH.
4. **Proceed with brush washing** in the SECOND and THIRD WASH basins.
5. **Pour pigment contaminated water** and water-based liquid into marked **PIGMENT WASTE WATER** drum and/or containers using provided funnels.
6. **Pour the dirtiest water out** (this should be the FIRST WASH BIN) and refill with fresh water to a level of 1-2 inches (2.5 - 5cm).

Empty paint tubes and hardened paint must be put in
marked red solid pigment waste containers.

Health & Safety & Painting

OILS & SOLVENTS



Oil Paints

Oil-based paints, solvents and mediums are toxic! The binders used in the paints are potentially hazardous, and the pigments often contain heavy metals and other chemicals. The organic solvents used to thin oil paints are also highly toxic and should only be used with appropriate precautions and with ventilation.

Oil painting practice/solvent use is **restricted to DSS Rm. 200, only when appropriate fan + venting is engaged or AAC 3007.**

Studio users are not permitted to use oil paints and solvents in other parts of Dorothy Somerset Studios, including the DSS Room 207 - The Mezzanine or AAC 3000.



Solvents

- **Only Odourless Mineral Spirit type solvents are permitted in AHVA facilities.** Turpentine, standard or industrial paint thinners, and lacquer thinners are restricted in AHVA studio facilities for ventilation and safety reasons. *Please consult with your Instructor or area technician - Frances Hart D'Emilio for recommended types of solvent or brands.*
- Pour out only the amount of solvent you will use for your painting session, as solvent evaporates into the air when uncovered, and causes hazardous fumes.
- Due to increased solvent evaporation rates, solvent-based washes are restricted. Please use water-based media for washes, or contact the area technician before using solvent-based washes.
- **Avoid direct or prolonged inhalation of solvents. Ensure adequate ventilation. Consult SDS sheets and speak to area staff if in doubt.**
- **Avoid direct skin contact with solvents.** Solvents can be absorbed through the skin and solvent/pigment solutions can cause heavy metals to become absorbed into the body. Use Nitrile or PVA gloves for odourless mineral spirits and consult SDS and staff to determine appropriate gloves for your materials.
- **Solvents should not be used at all during pregnancy.**



Oil Paint Clean-Up

Do not pour oil paint, solvents, or contaminated liquid down the sink, into the garbage, or into the Pigment Wastewater containers!!!

The washing of brushes and other contaminated items (e.g. palettes, knives) must NOT be done in any of the studio sinks or washrooms. Please use the marked OILS & SOLVENTS WASH tins provided for washing brushes.

- 1. Begin by wiping surplus wet paint onto provided grey rags.** Dirty rags must be put into the marked covered metal OILY RAG BIN. Do not put dirty rags in the garbage.
- 2. Whenever possible, use non-toxics** such as canola oil and soap for brush cleaning.
- 3. When necessary, add odourless mineral spirits.** Use Nitrile or PVA gloves when cleaning brushes with odourless mineral spirits.
- 4. Pour pigment, oil, and solvent contaminated waste** into the red plastic WASTE SOLVENT containers using provided funnels.
- 5. Put the cap back on** the WASTE SOLVENT container when you are finished.
- 6. Don't leave your brushes soaking in thinner when you are not working.**



Oil Paint Clean-Up

Do not pour oil paint, solvents, or contaminated liquid down the sink, into the garbage, or into the Pigment Wastewater containers!!!

The washing of brushes and other contaminated items (e.g. palettes, knives) must NOT be done in any of the studio sinks or washrooms. Please use the marked OILS & SOLVENTS WASH tins provided for washing brushes.

1. **Begin by wiping surplus wet paint onto provided grey rags.** Dirty rags must be put into the marked covered metal OILY RAG BIN. Do not put dirty rags in the garbage.
2. **Whenever possible, use non-toxics** such as canola oil and soap for brush cleaning.
3. **When necessary, add odourless mineral spirits.** Use Nitrile or PVA gloves when cleaning brushes with odourless mineral spirits.
4. **Pour pigment, oil, and solvent contaminated waste** into the red plastic WASTE SOLVENT containers using provided funnels.
5. **Put the cap back on** the WASTE SOLVENT container when you are finished.
6. Don't leave your brushes soaking in thinner when you are not working.



Health & Safety & Painting

STUDIO USE & ACCESS



Mezzanine Use

The Dorothy Somerset Mezzanine (Rm. 207) is a shared studio workspace. Please be respectful of the space and each other:

- Clean up your workspace after you are finished, and do not leave garbage, loose materials, or projects lying around.
- **In practice, cleaning up your space means that you wheel your easel back to Room 200, clean any spilled paint from tables, and dispose of Kraft paper floor protection in appropriate receptacles. It also means that you empty all of your wastewater/solvent cups into appropriate containers, and move personal materials and tools to your locker. Canvasses can be stored in racks located in Mezzanine and outside Room 200 in hallway.**
- Loose items will be removed at owner's expense.
- Food and drinks must not be left out.
- Enter and exit quietly if a class is in progress in Rm. 200

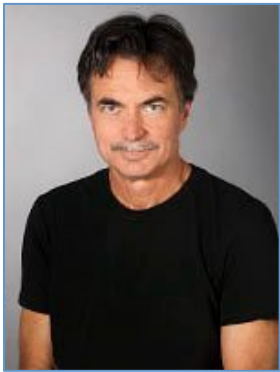
After Hours Access

After hours access is available to fro both the mezzanine and room 200. To be eligible, students must be currently registered in a VISA studio class.

To access the Mezzanine and Rm. 200 outside of the hours of 8:30 am – 5:00 pm Monday to Friday, you must sign out a key from the area Technician in the AHVA Workshop in Rm. 106.

- Keys can be signed out for a period of 24 hours during the week, and from 5 pm Friday to Monday at 12 pm over weekends. Late key returns will result in loss of after hours privileges.

AHVA Area Staff

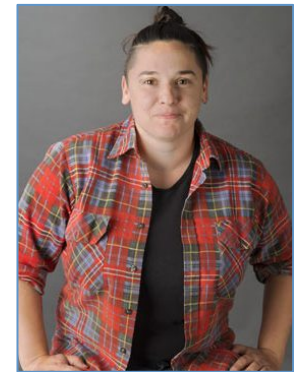


Rob Bos – *Photography and Digital Media Technician*

604-822-8088; robert.bos@ubc.ca

Frances Hart D'Emilio – *Drawing, Painting, and
Sculpture Technician*

604-822-4647; ahva.shop@ubc.ca



Ian Craig – *Printmaking Technician*

604-822-3462; ian.craig@ubc.ca

UBC Department of Art History, Visual Art and Theory

Lasserre Building – Room 400

6333 Memorial Road

Vancouver, BC, V6T 1Z2

ahva.dept@ubc.ca

